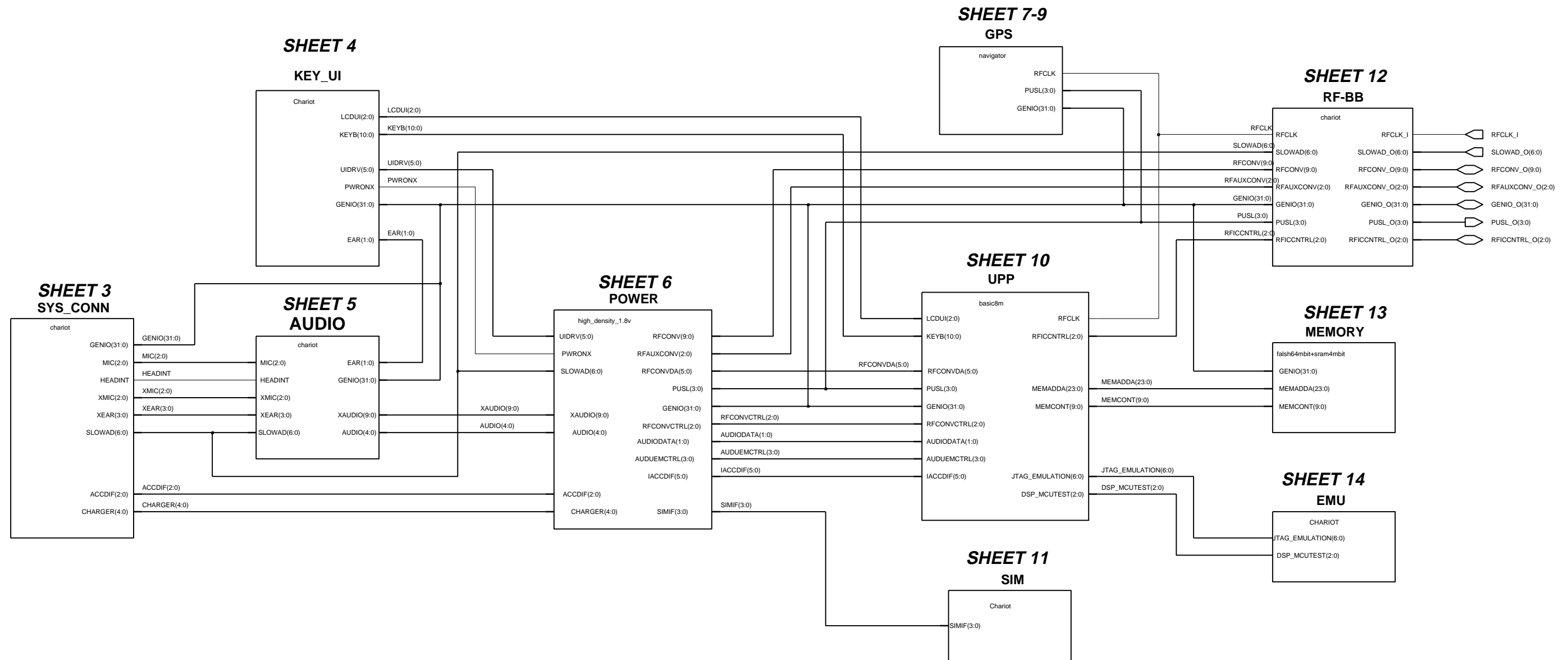
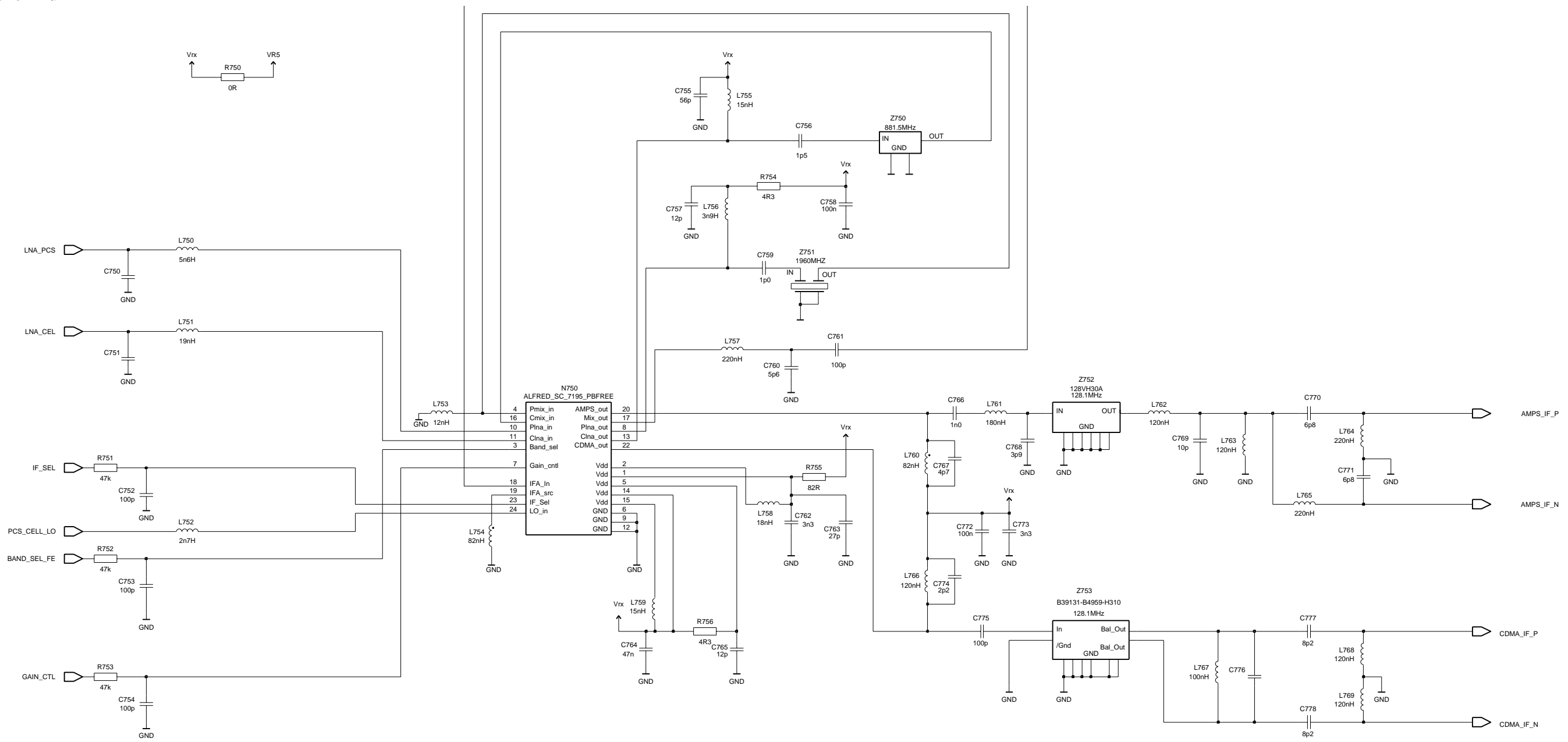


6015 Schematics

Baseband - Top



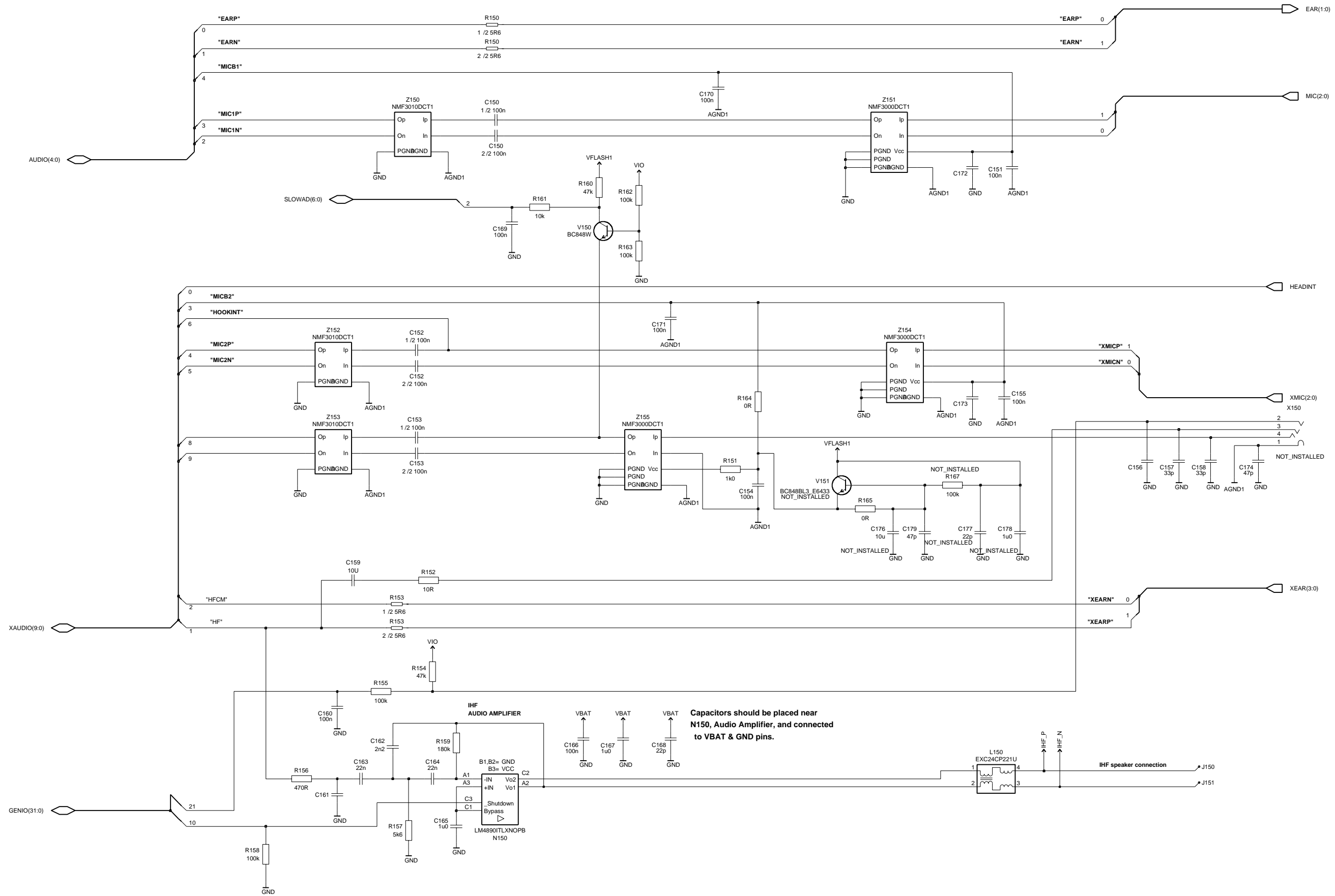
Front End



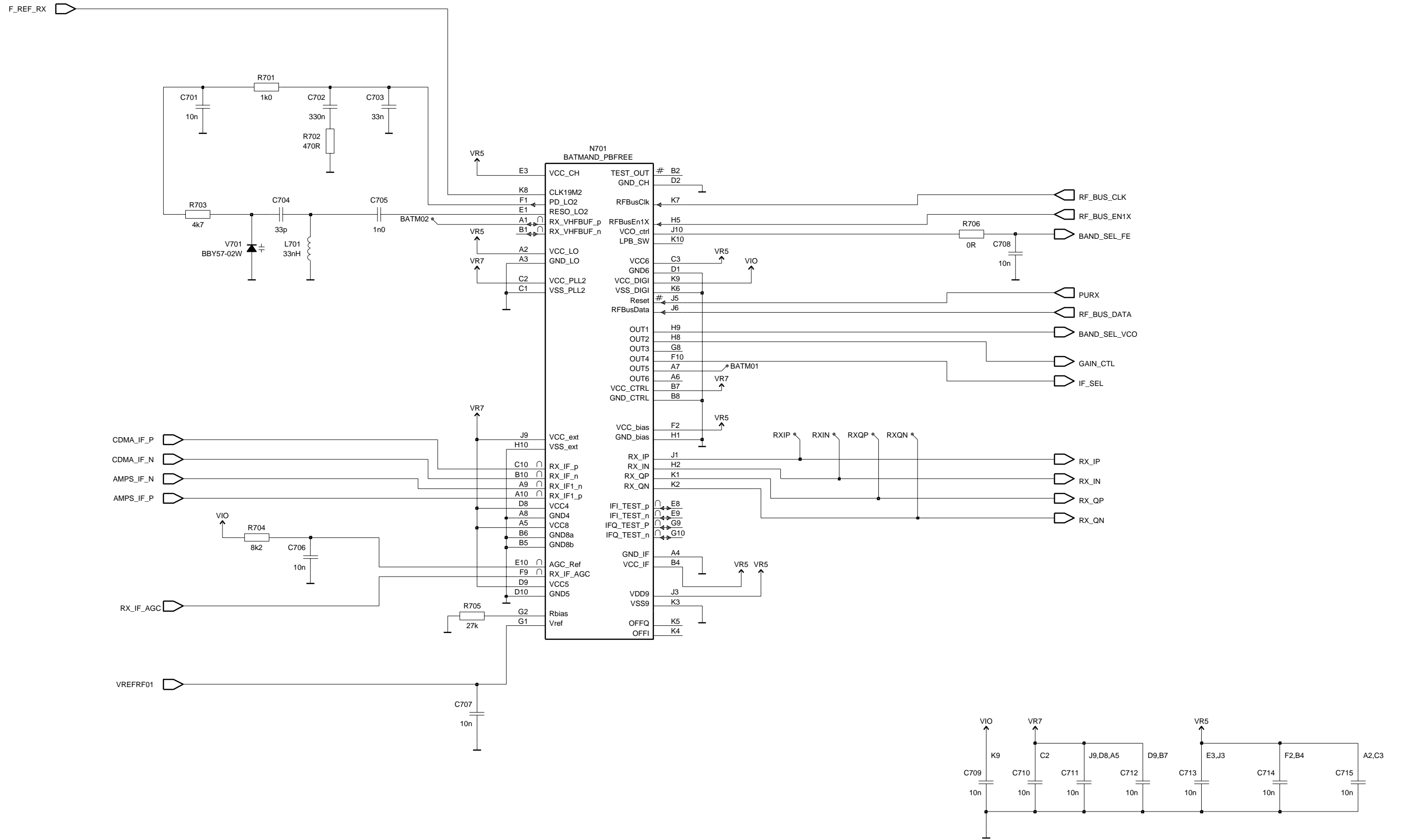
MODES	LOGIC INPUTS		
	BAND	GAIN_CTL	IF_SEL
CEL CDMA Hi Gain	0	1	0
CEL CDMA Lo Gain	0	0	0
PCS CDMA Hi Gain	1	1	0
PCS CDMA Lo Gain	1	0	0
AMPS Hi Gain	0	1	1
AMPS Lo Gain	0	0	1

VARIANT DNI	
HDB91 800	HDC93 1900
C750	C751
C759	C756
L750	C766
Z751	C768
	C769
	C770
	C771
	L751
	L761
	L762
	L763
	L764
	L765
	Z750
	Z752

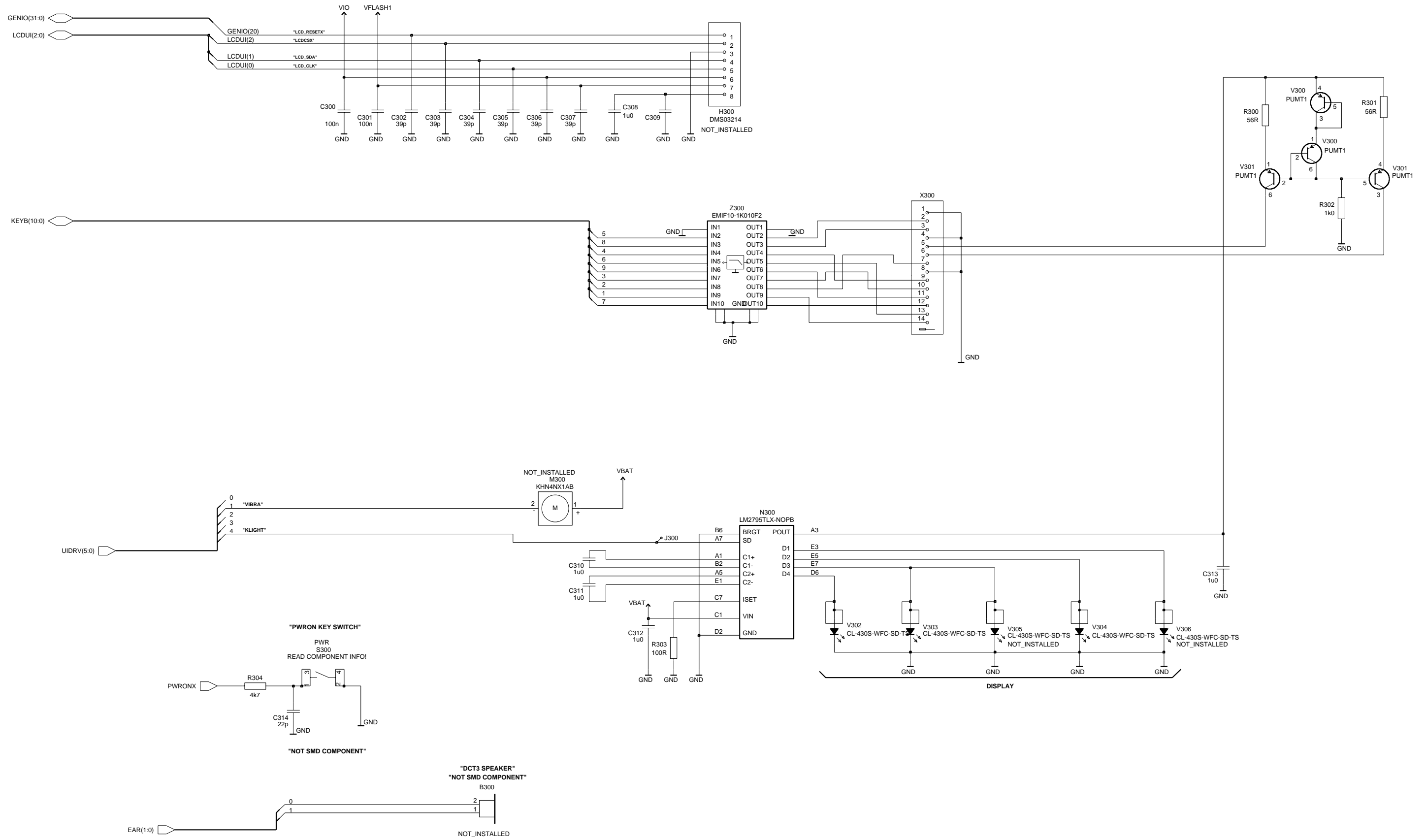
Audio



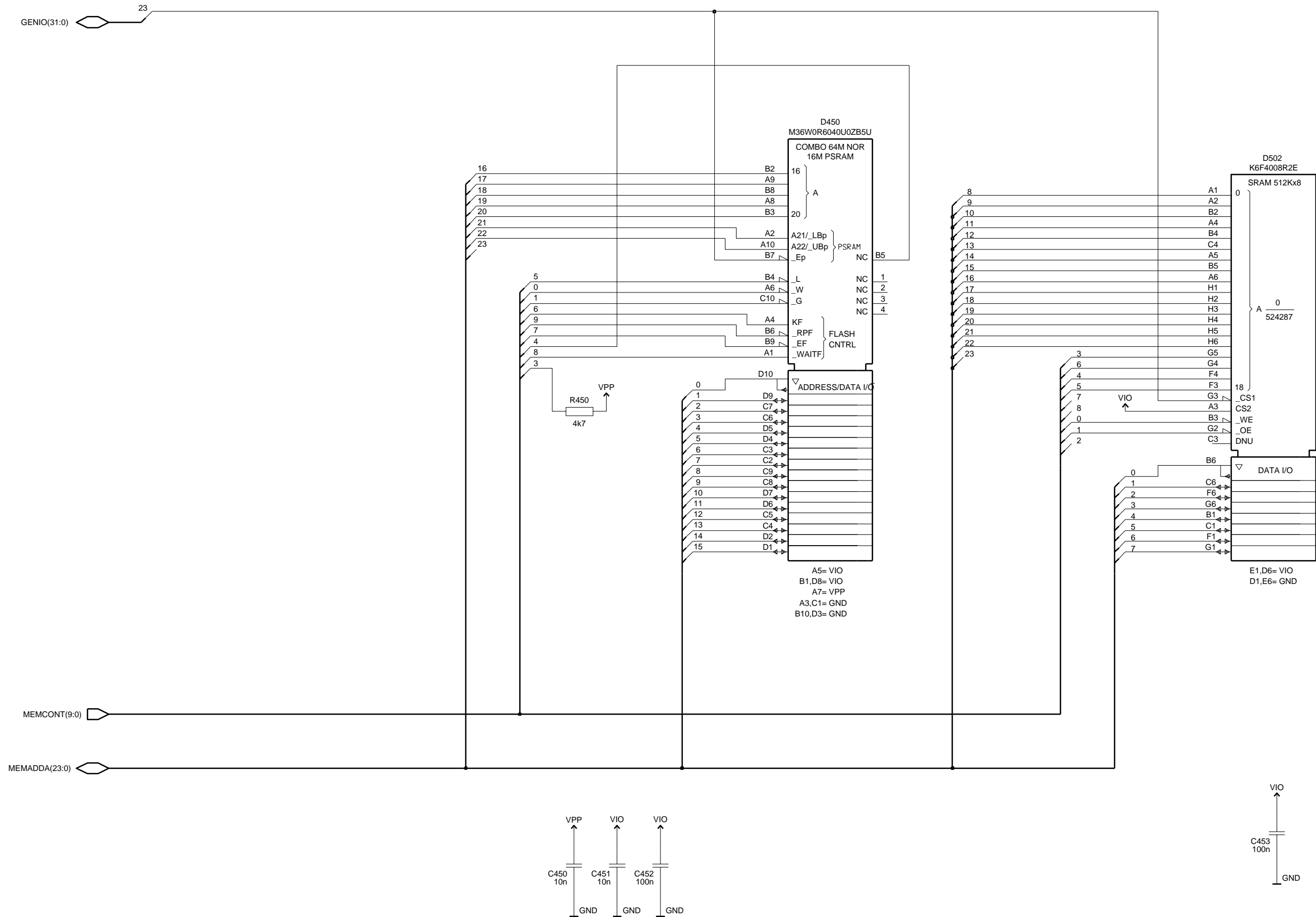
Batman



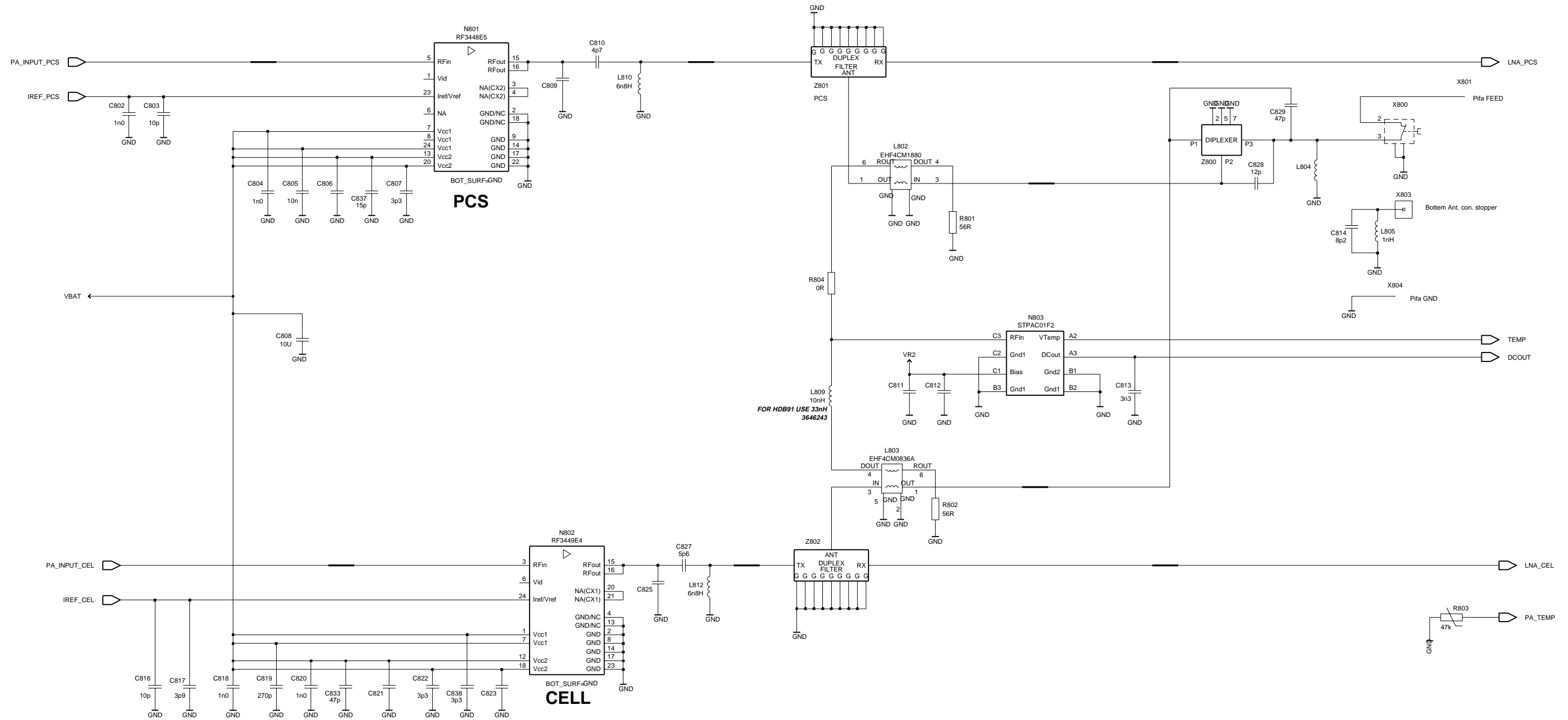
Key UI



Memory

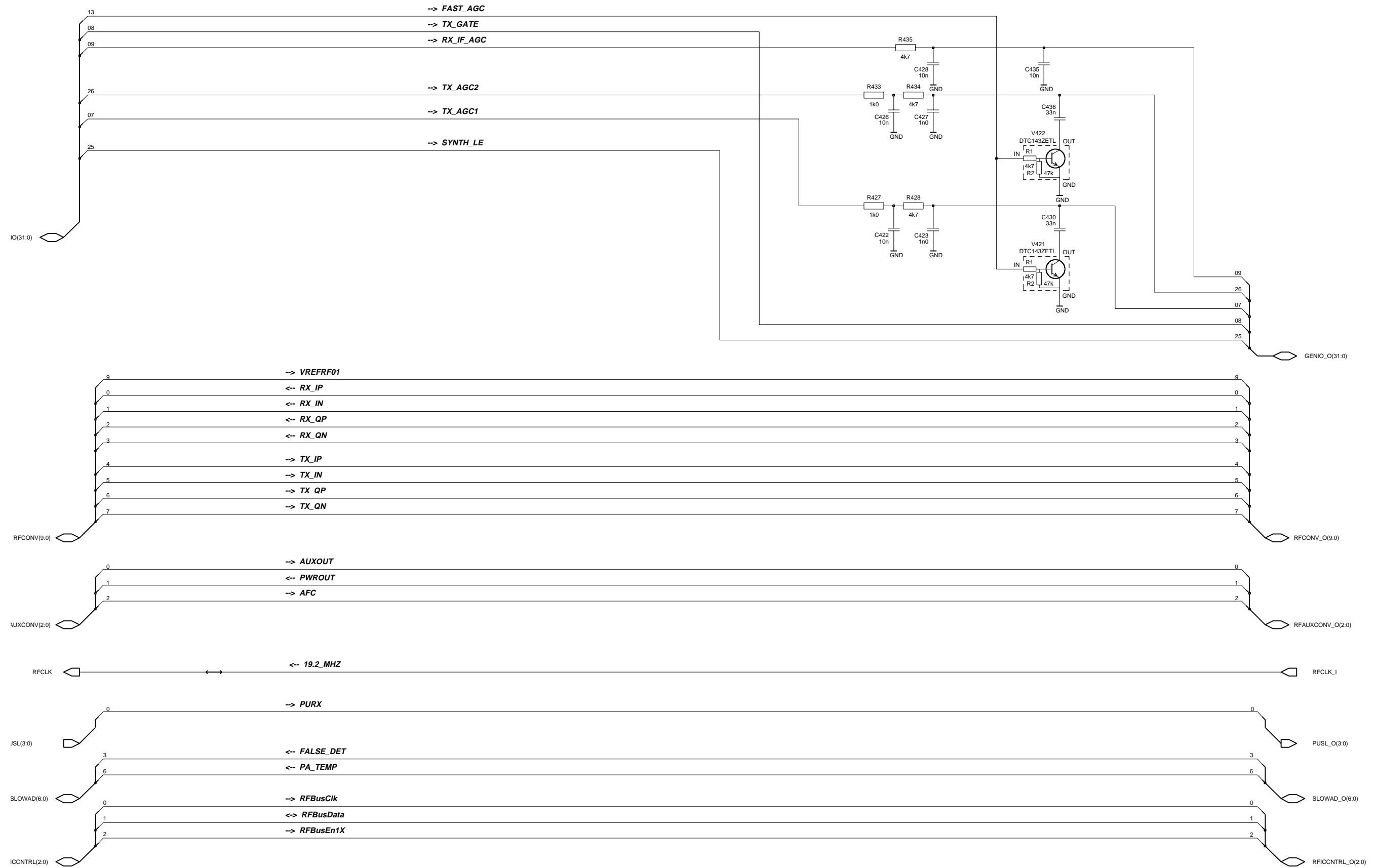


PA



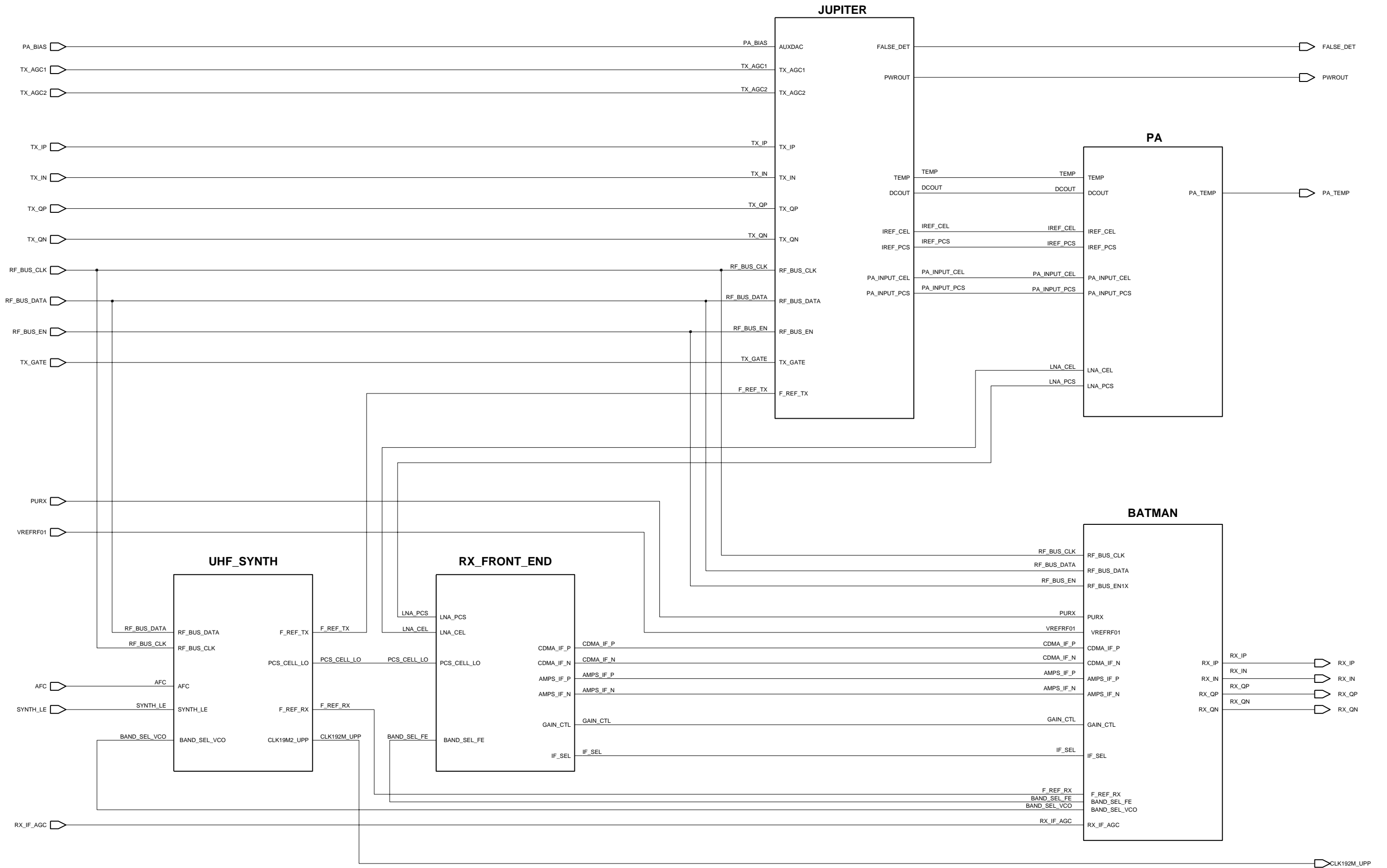
VARIANT DNI		
HDC91 DB	HDB91 800	HDC93 1900
C828	C802	C816
C829	C803	C817
	C804	C818
	C805	C819
	C806	C820
	C807	C821
	C809	C822
	C810	C823
	C828	C825
	C837	C827
	L802	C829
	L810	C833
	N801	C838
	R801	L803
	R804	L808
	Z800	L811
	Z801	R802
		Z800
		Z802

RF-BB Interface

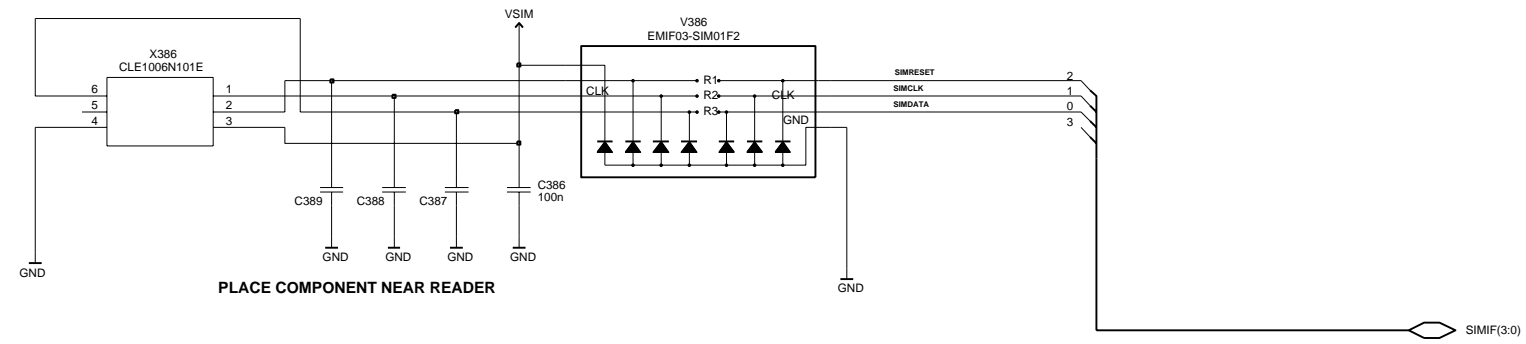




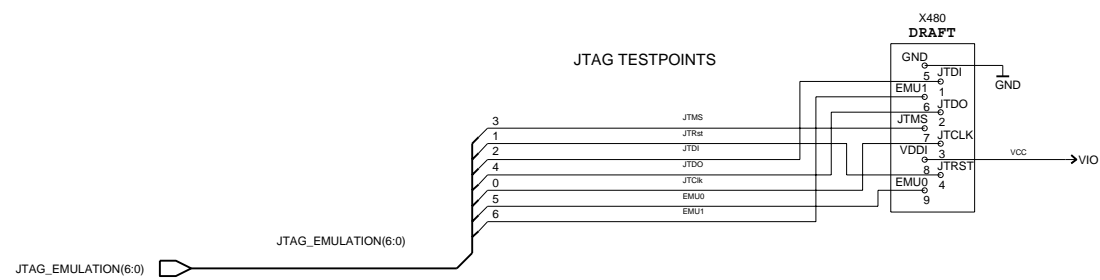
RF - Top



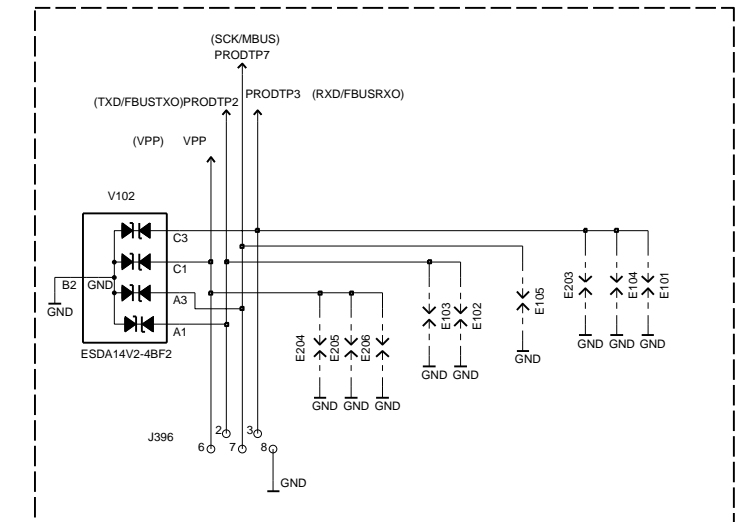
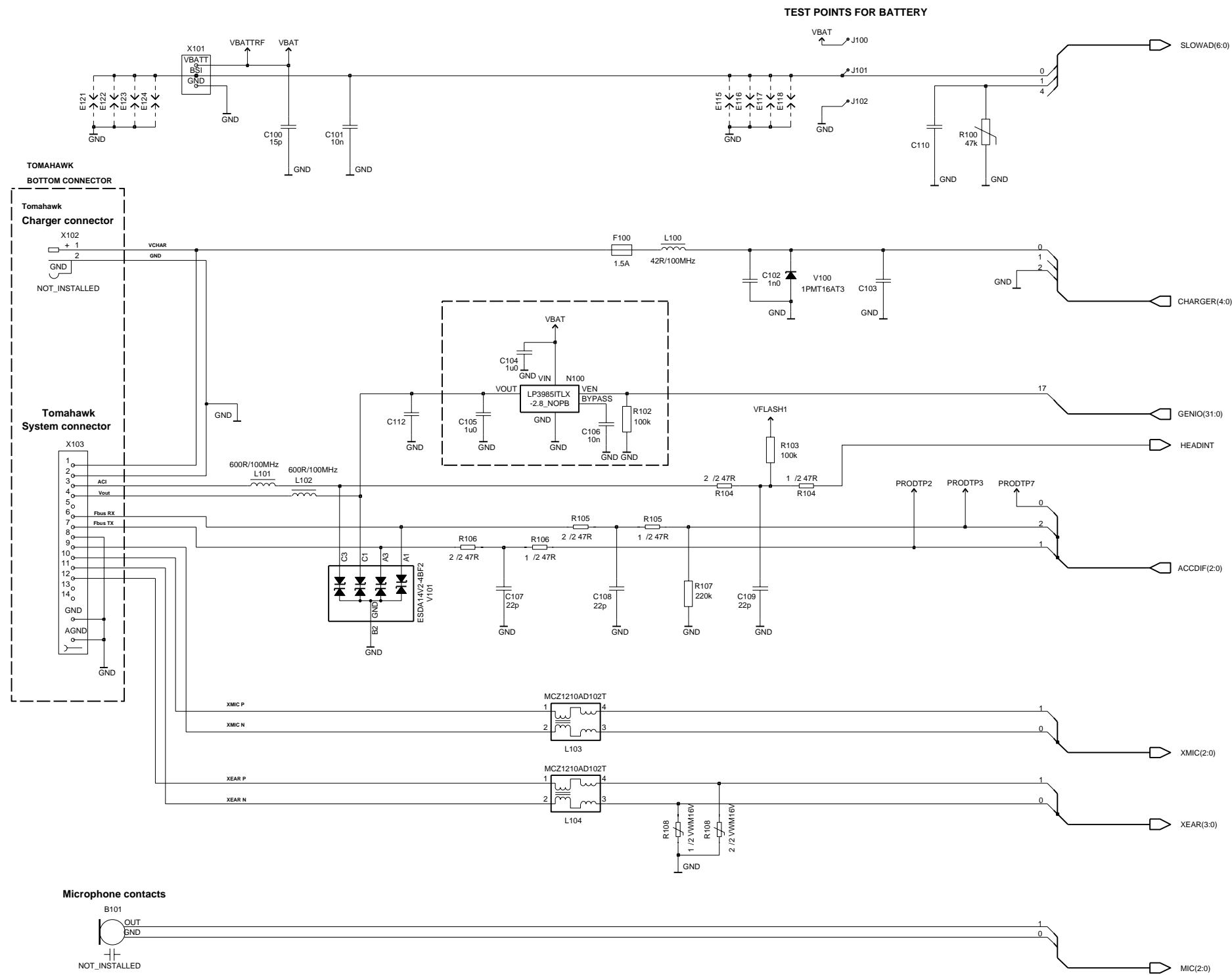
**SIM**



**Test and Emulator Interface**

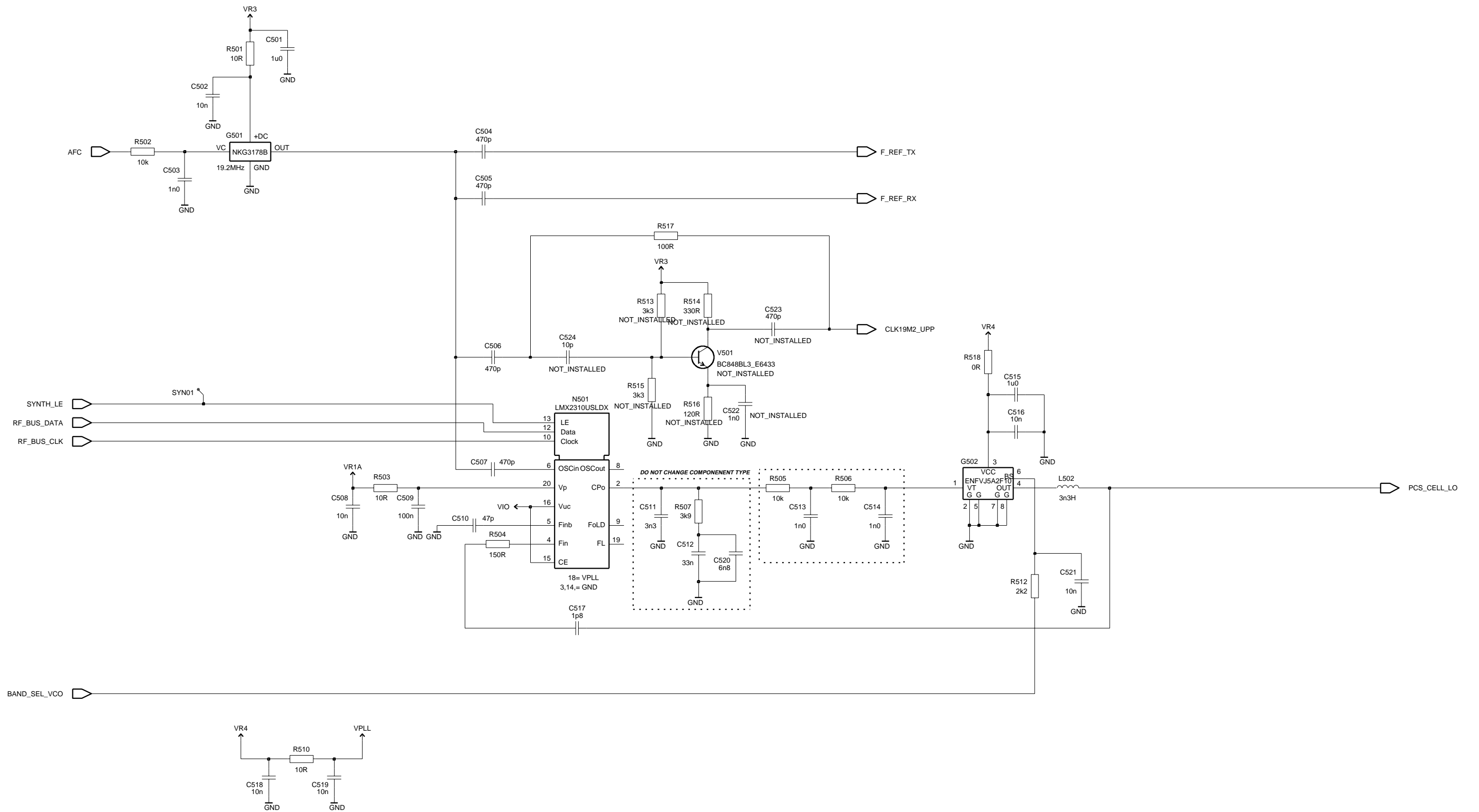


System Connector

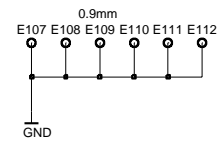
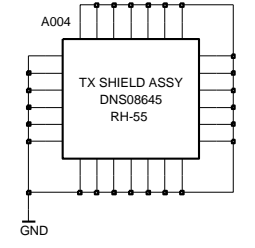
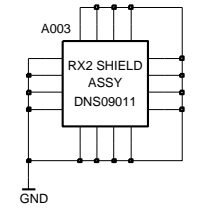
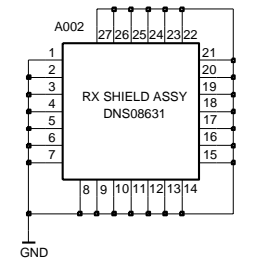
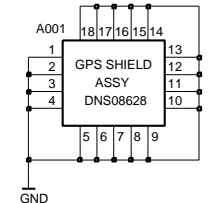
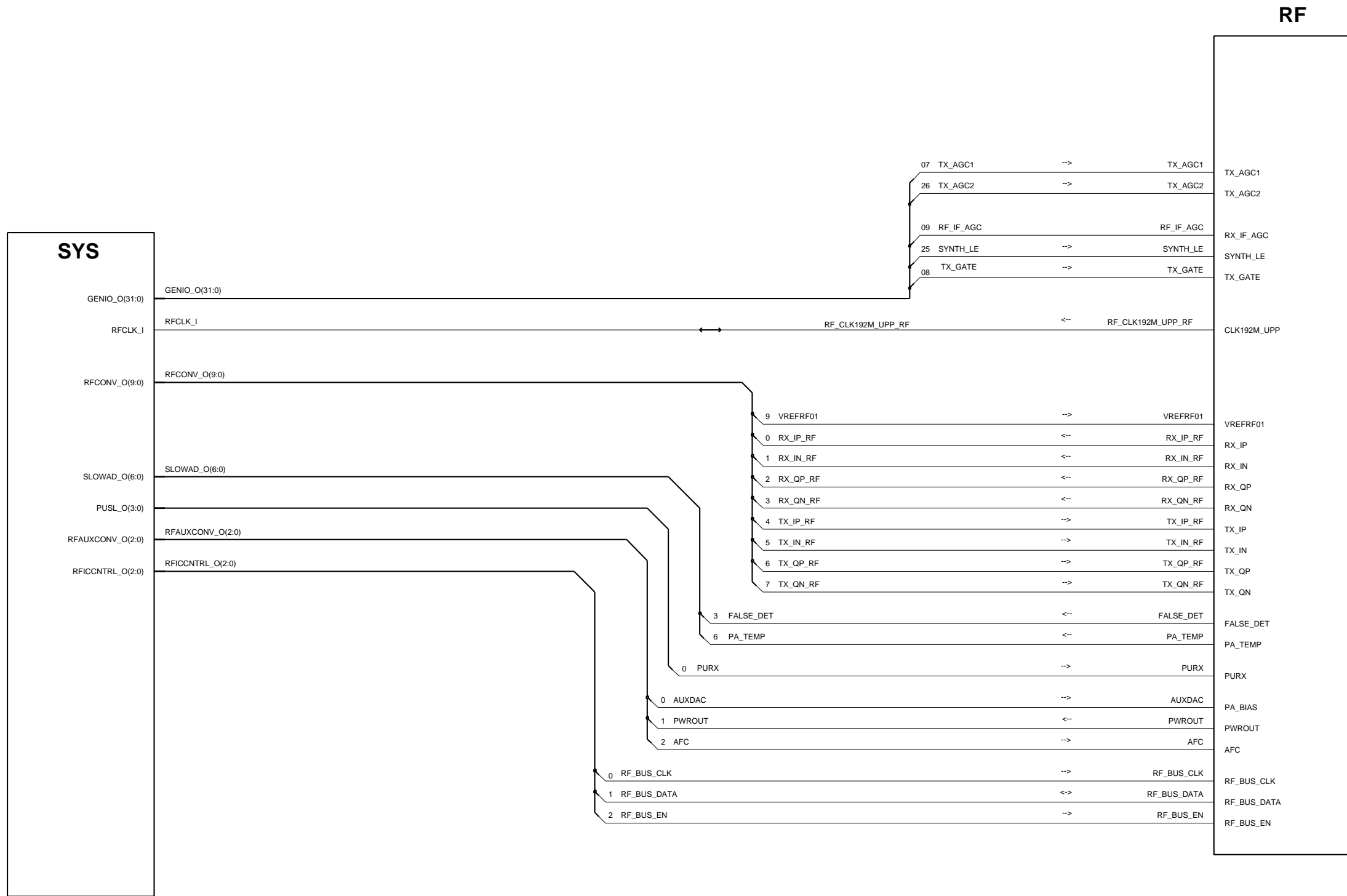


PROD TEST PATTERN

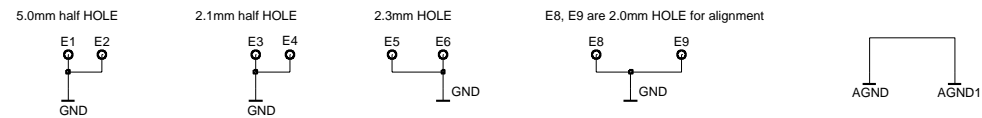
UHF Synthesizer



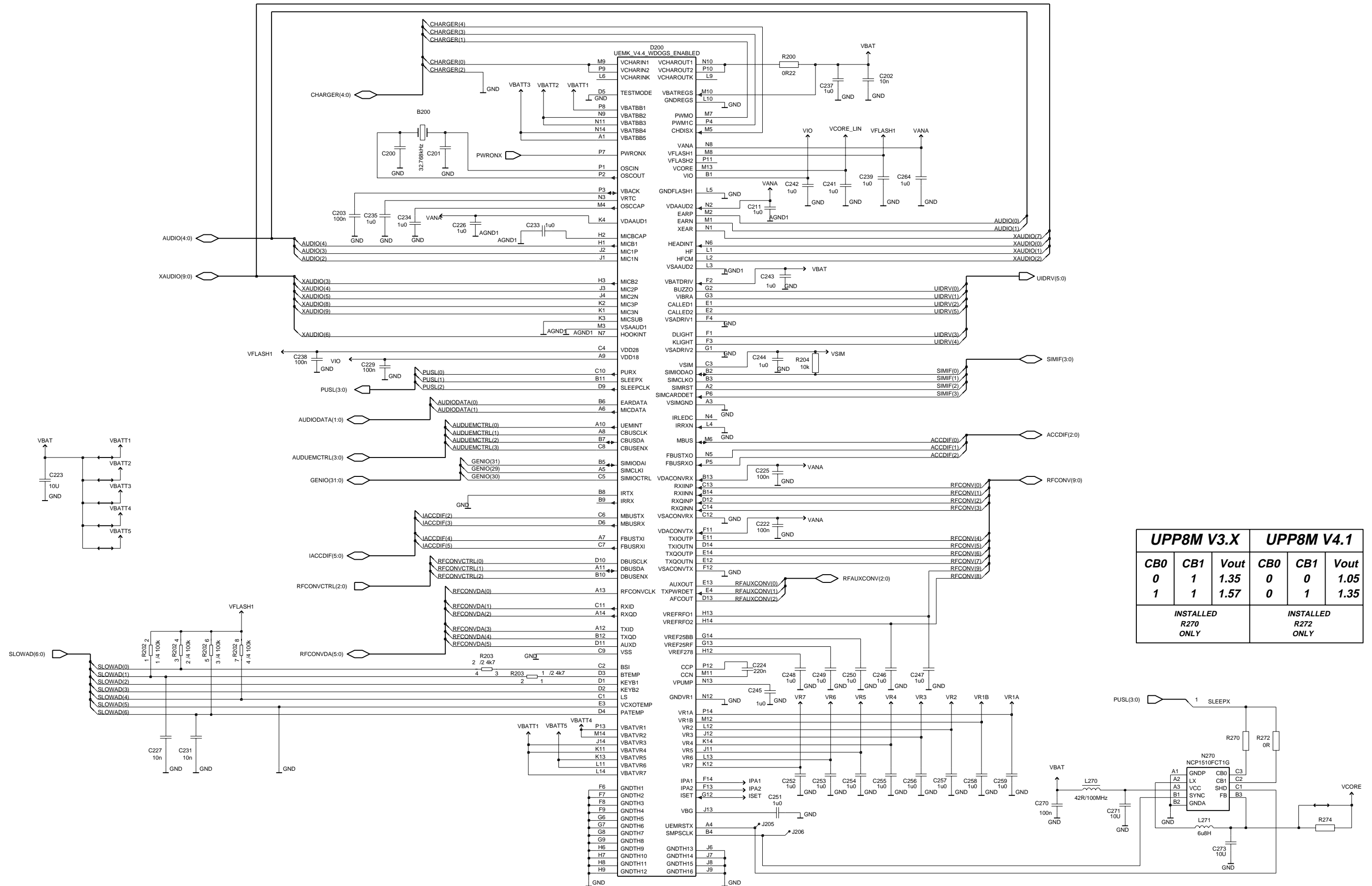
Top Level



Mechanical Plated Thru Holes

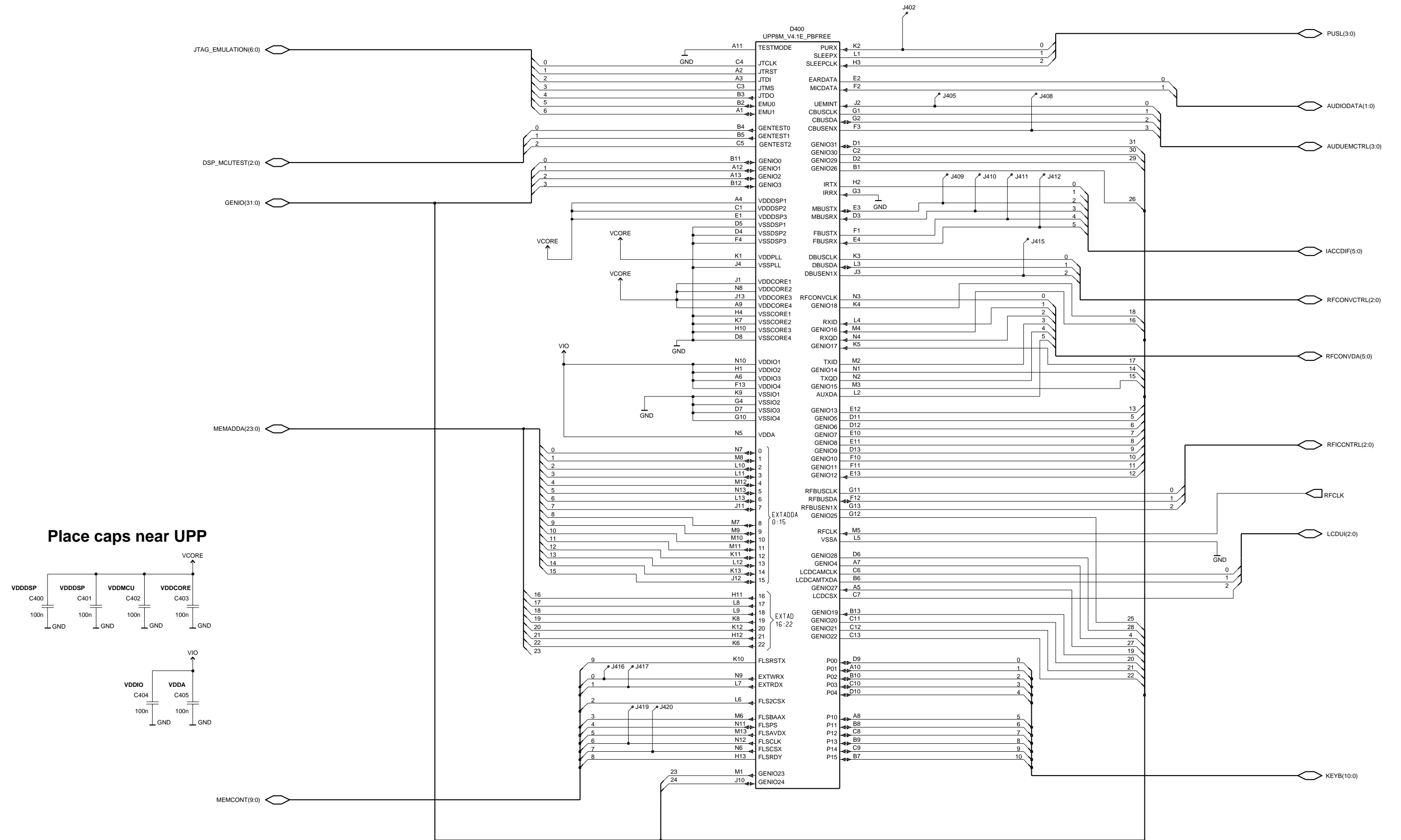


UEM

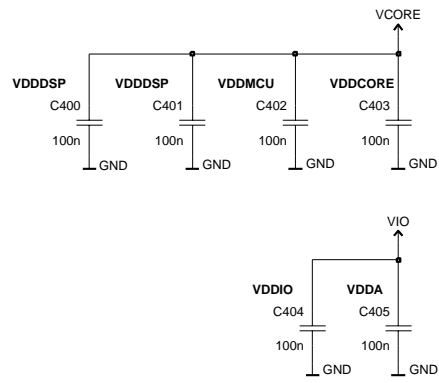


UPP8M V3.X			UPP8M V4.1		
CB0	CB1	Vout	CB0	CB1	Vout
0	1	1.35	0	0	1.05
1	1	1.57	0	1	1.35
INSTALLED ONLY			INSTALLED ONLY		
R270			R272		
ONLY			ONLY		

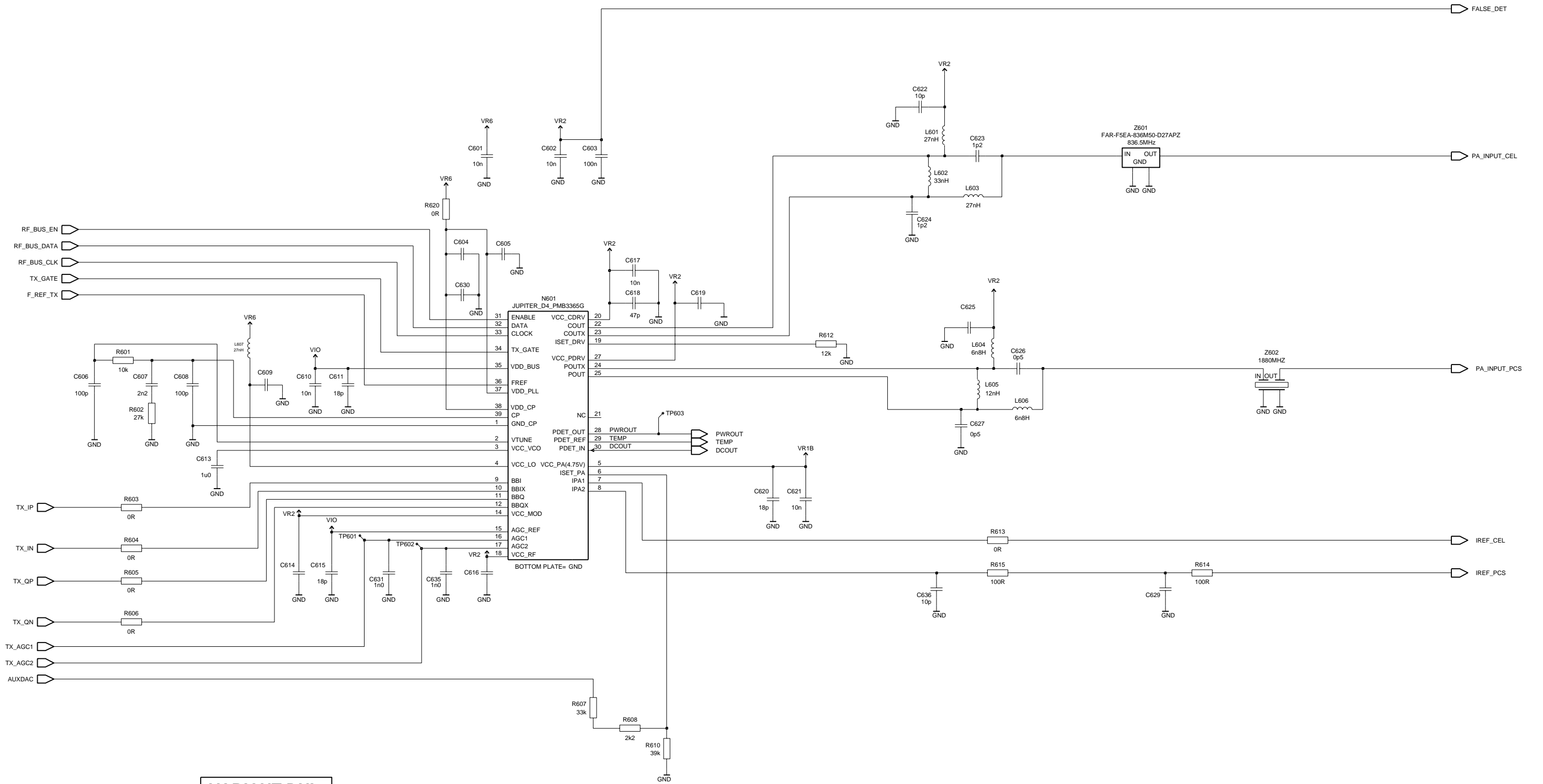
UPP



Place caps near UPP



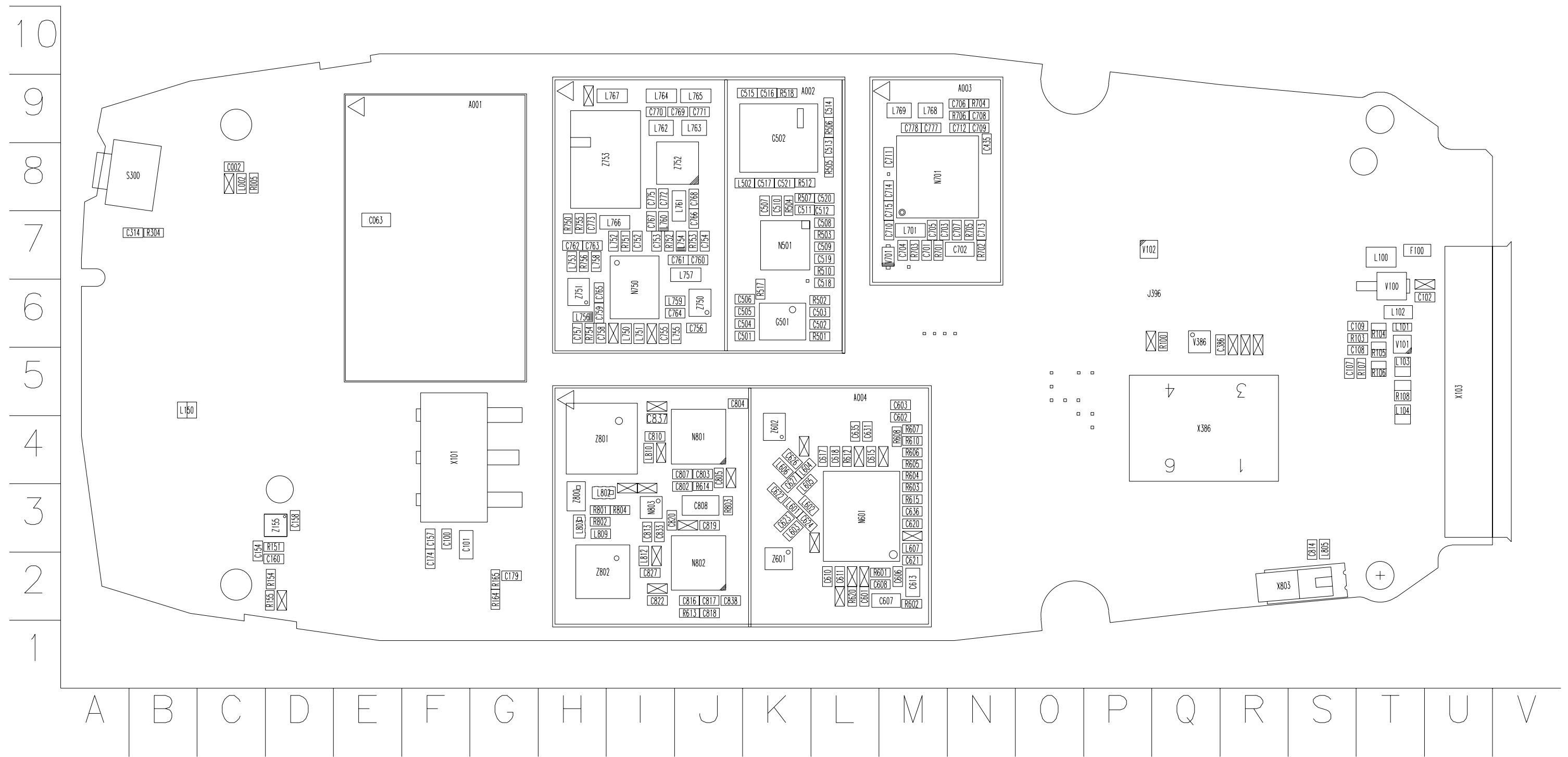
Jupiter



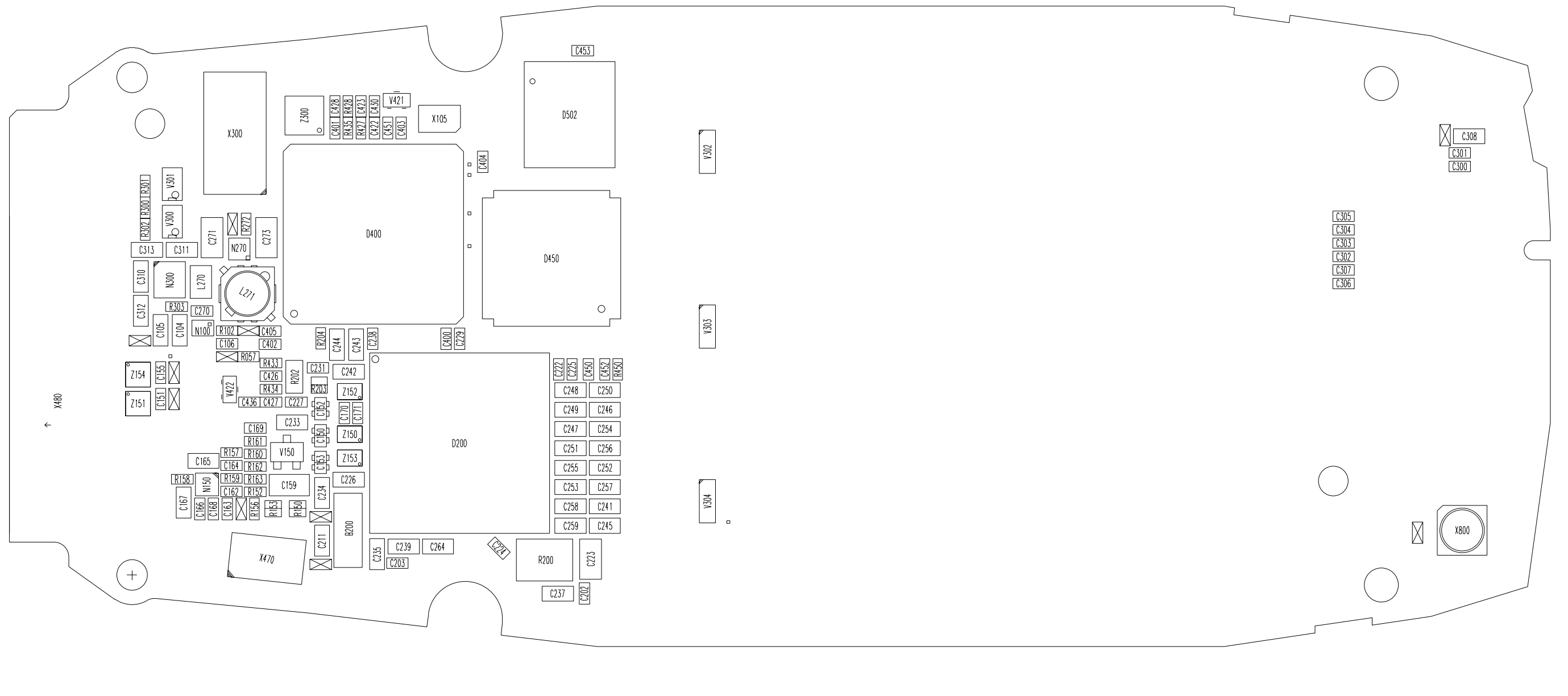
VARIANT DNI	
HDB91 800	HDC93 1900
C625	C622
C626	C623
C627	C624
C629	L601
L604	L602
L605	L603
L606	R613
R614	Z601
Z602	



6015 — 0202481 Component Layout — Top



6015 — 0202481 Component Layout — Bottom



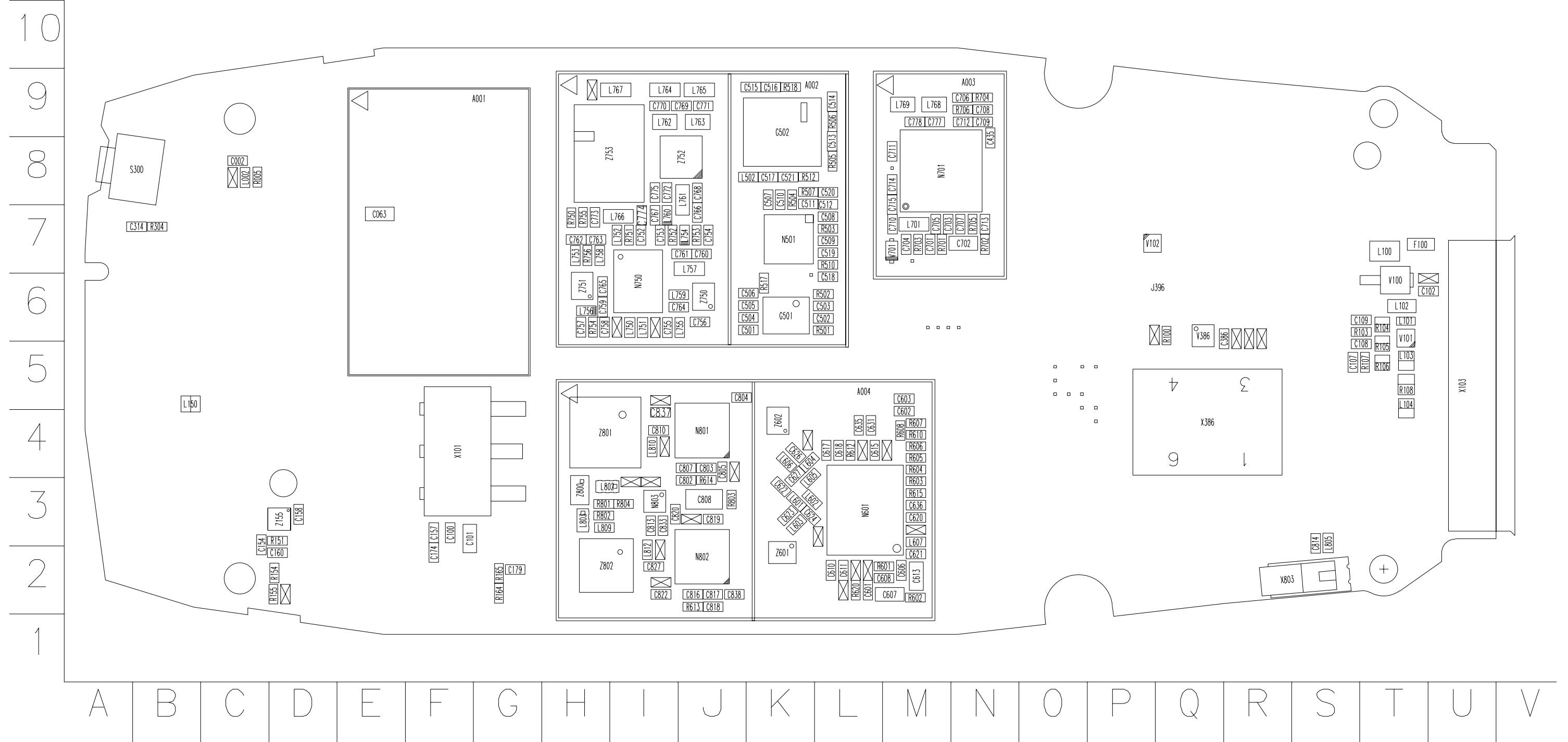
V	U	T	S	R	Q	P	O	N	M	L	K	J	I	H	G	F	E	D	C	B	A
---	---	---	---	---	---	---	---	---	---	---	---	---	---	---	---	---	---	---	---	---	---

10
9
8
7
6
5
4
3
2
1

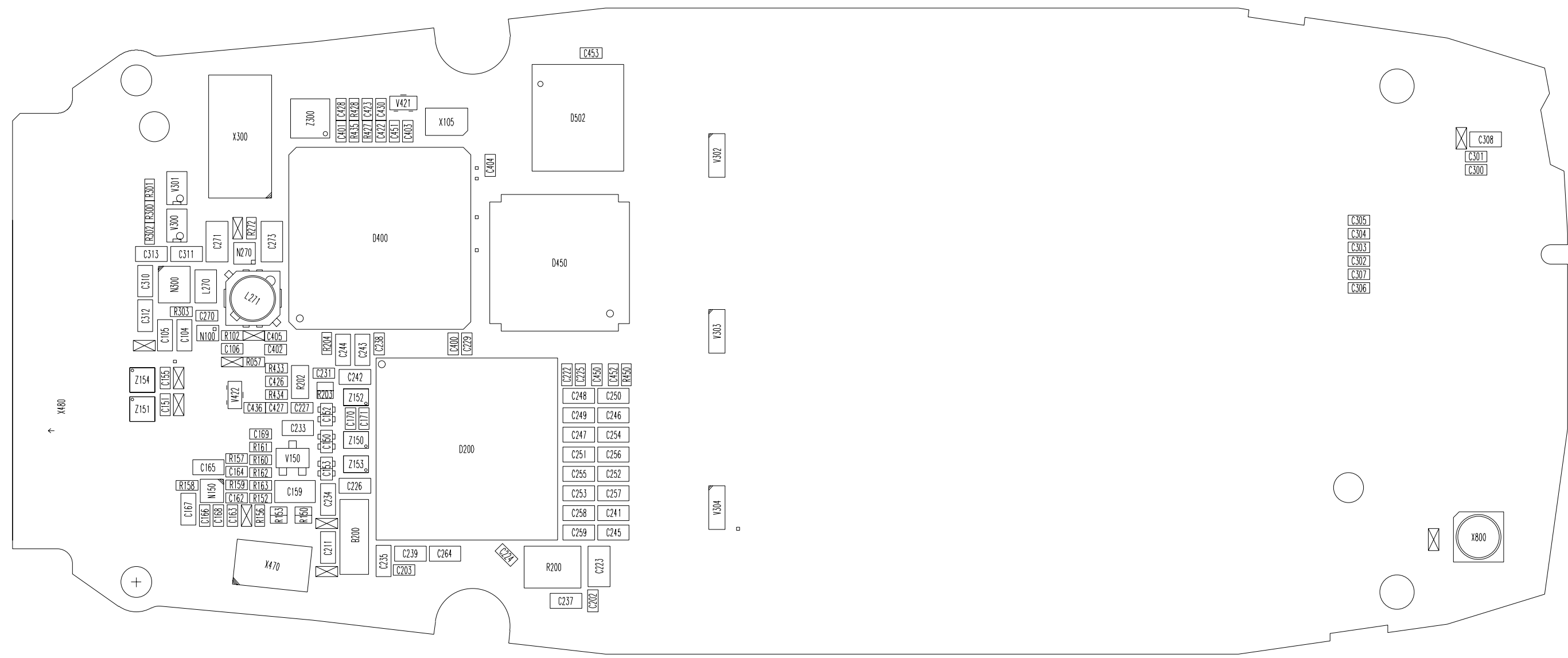




6015 — 0202491 Component Layout — Top



6015 — 0202491 Component Layout — Bottom



V	U	T	S	R	Q	P	O	N	M	L	K	J	I	H	G	F	E	D	C	B	A
---	---	---	---	---	---	---	---	---	---	---	---	---	---	---	---	---	---	---	---	---	---

10
9
8
7
6
5
4
3
2
1



